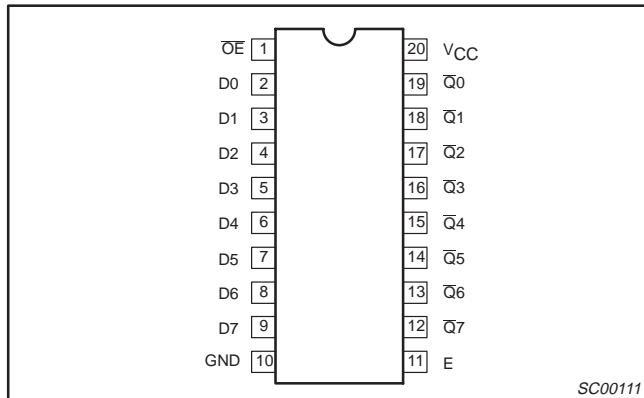


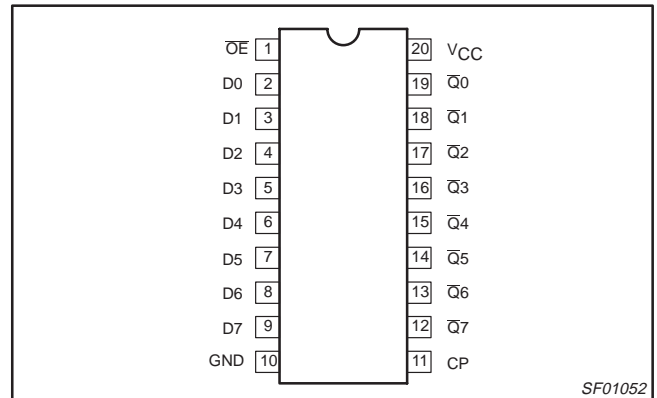
Latch/flip-flop

74ALS563A/74ALS564A

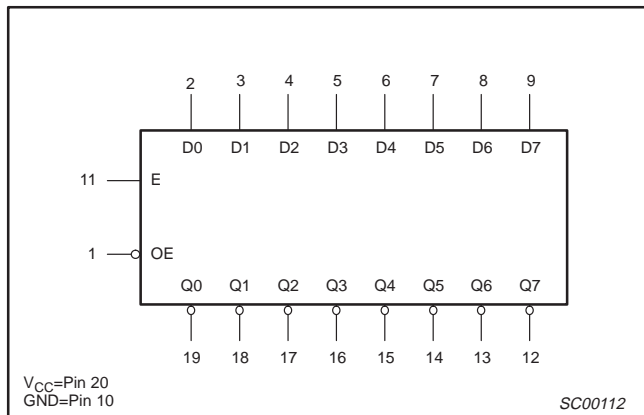
PIN CONFIGURATION – 74ALS563A



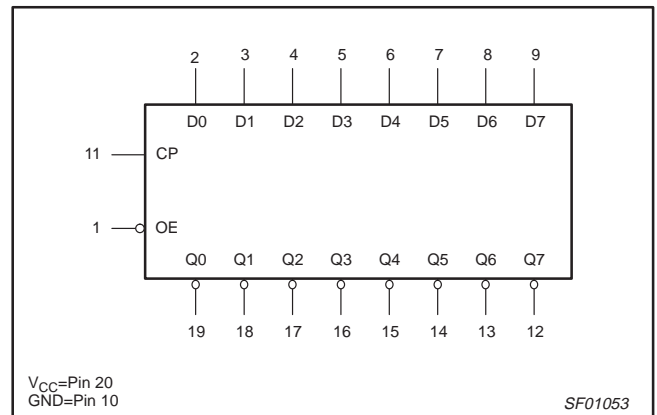
PIN CONFIGURATION – 74ALS564A



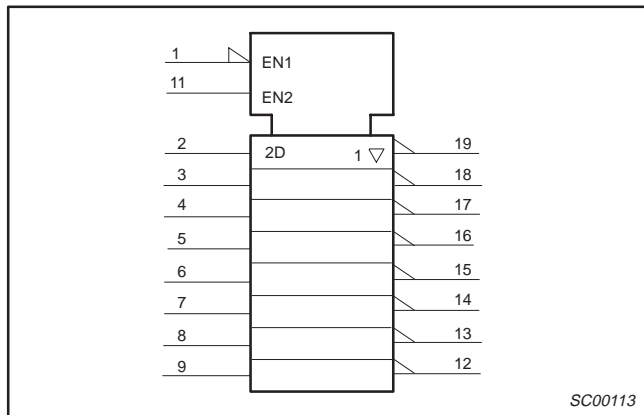
LOGIC SYMBOL – 74ALS563A



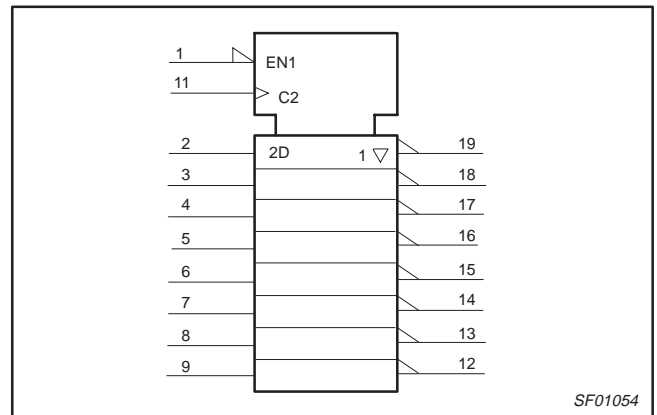
LOGIC SYMBOL – 74ALS564A



IEC/IEEE SYMBOL – 74ALS563A



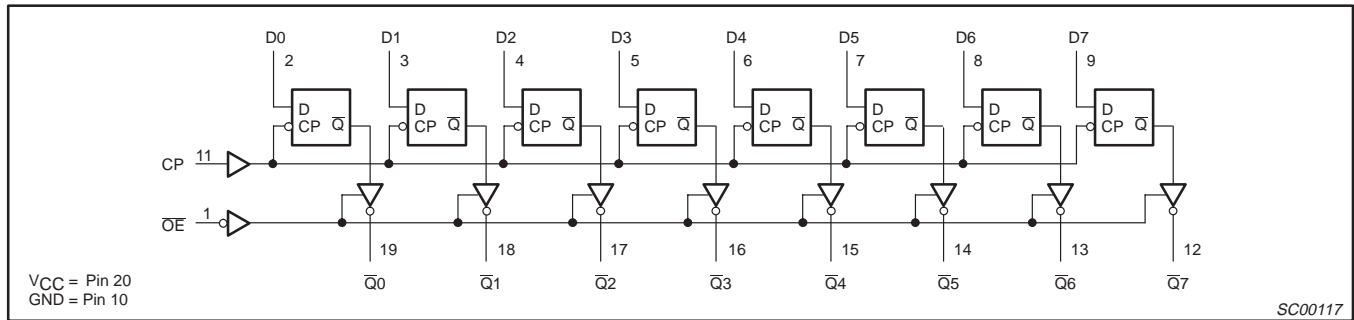
IEC/IEEE SYMBOL – 74ALS564A



Latch/flip-flop

74ALS563A/74ALS564A

LOGIC DIAGRAM – 74ALS564A



FUNCTION TABLE – 74ALS564A

INPUTS			OUTPUTS REGISTER	INTERNAL	OPERATING MODE
\overline{OE}	CP	Dn		$\overline{Q0} - \overline{Q7}$	
L	\uparrow	l	L	H	Load and read register
L	\uparrow	h	H	L	
L	\updownarrow	X	NC	NC	Hold
H	\updownarrow	X	NC	Z	Disable outputs
H	\uparrow	Dn	Dn	Z	

H = High voltage level
 h = High state must be present one setup time before the Low-to-High clock transition
 L = Low voltage level
 l = Low state must be present one setup time before the Low-to-High clock transition
 NC = No change
 X = Don't care
 Z = High impedance "off" state
 \uparrow = Low-to-High clock transition
 \updownarrow = Not Low-to-High clock transition

ABSOLUTE MAXIMUM RATINGS

(Operation beyond the limit set forth in this table may impair the useful life of the device. Unless otherwise noted these limits are over the operating free-air temperature range.)

SYMBOL	PARAMETER	RATING	UNIT
V_{CC}	Supply voltage	-0.5 to +7.0	V
V_{IN}	Input voltage	-0.5 to +7.0	V
I_{IN}	Input current	-30 to +5	mA
V_{OUT}	Voltage applied to output in High output state	-0.5 to V_{CC}	V
I_{OUT}	Current applied to output in Low output state	48	mA
T_{amb}	Operating free-air temperature range	0 to +70	°C
T_{stg}	Storage temperature range	-65 to +150	°C